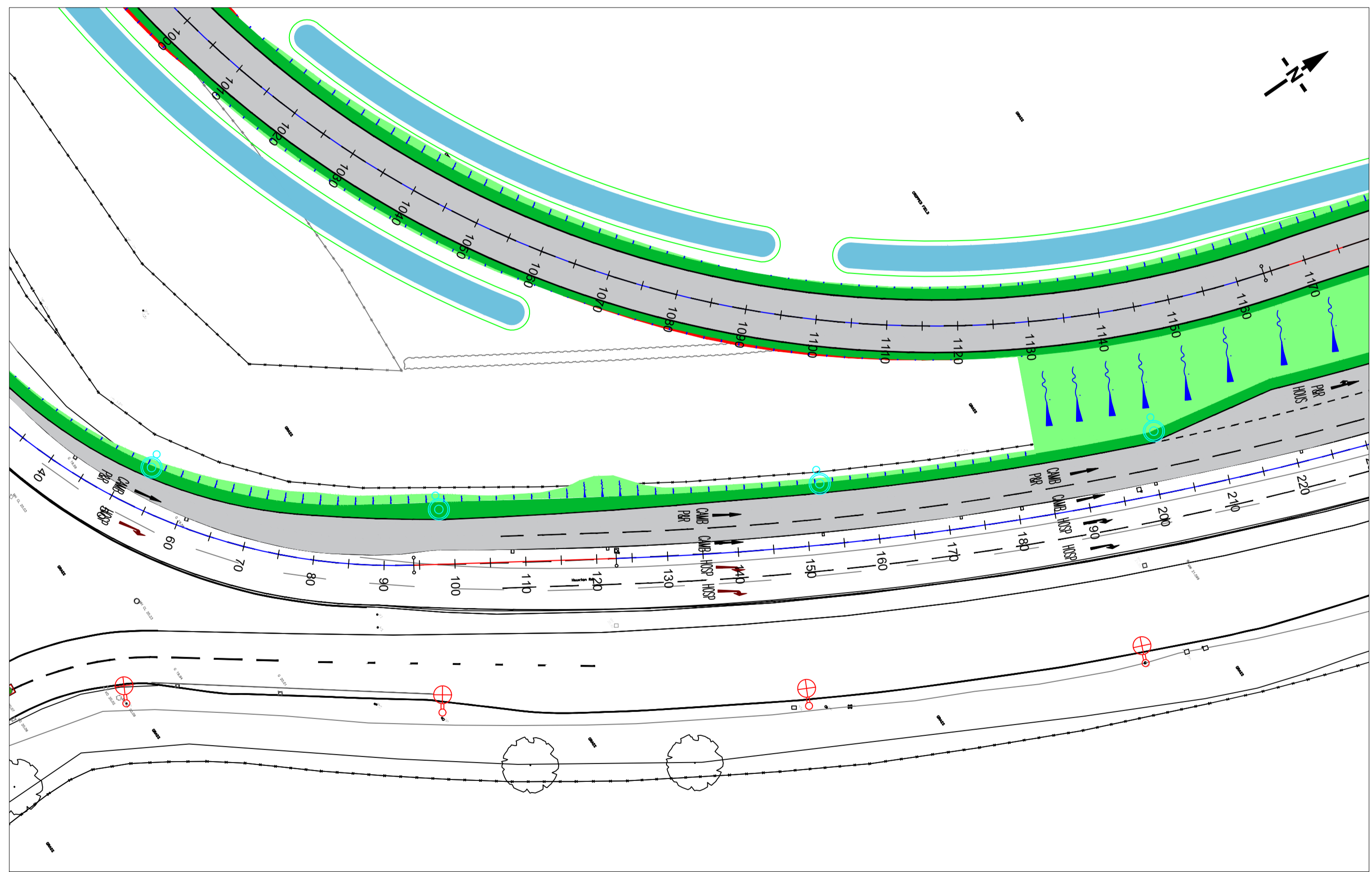
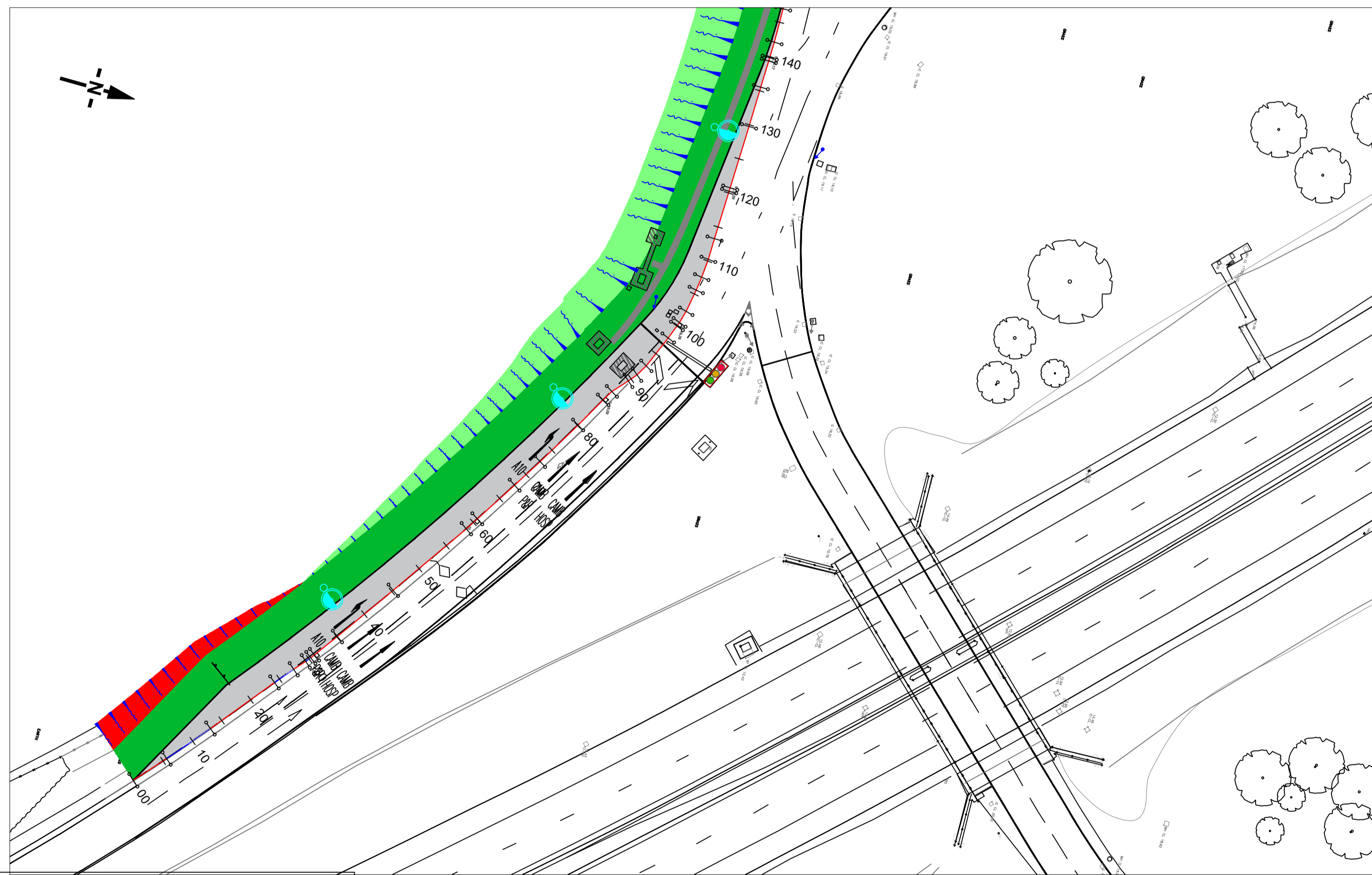
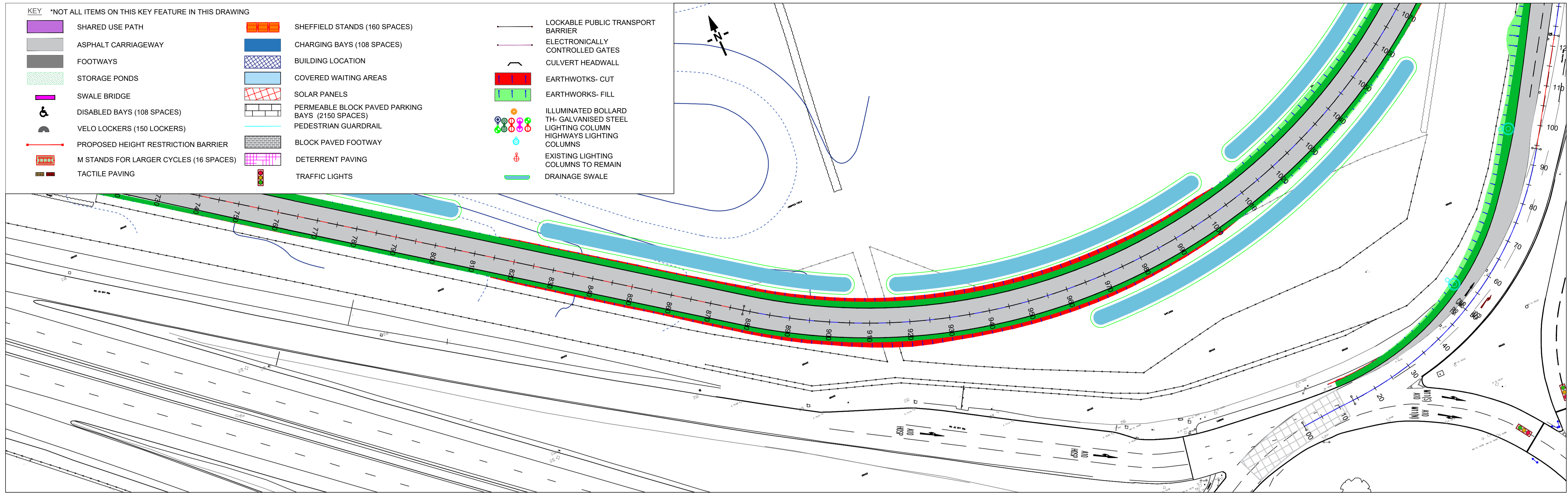


KEY *NOT ALL ITEMS ON THIS KEY FEATURE IN THIS DRAWING

| | | | | | |
|--|--|--|--|--|--------------------------------------|
| | SHARED USE PATH | | SHEFFIELD STANDS (160 SPACES) | | LOCKABLE PUBLIC TRANSPORT BARRIER |
| | ASPHALT CARRIAGEWAY | | CHARGING BAYS (108 SPACES) | | ELECTRONICALLY CONTROLLED GATES |
| | FOOTWAYS | | BUILDING LOCATION | | CULVERT HEADWALL |
| | STORAGE PONDS | | COVERED WAITING AREAS | | EARTHWORKS- CUT |
| | SWALE BRIDGE | | SOLAR PANELS | | EARTHWORKS- FILL |
| | DISABLED BAYS (108 SPACES) | | PERMEABLE BLOCK PAVED PARKING BAYS (2150 SPACES) | | ILLUMINATED BOLLARD |
| | VELO LOCKERS (150 LOCKERS) | | PEDESTRIAN GUARDRAIL | | TH- GALVANISED STEEL LIGHTING COLUMN |
| | PROPOSED HEIGHT RESTRICTION BARRIER | | BLOCK PAVED FOOTWAY | | HIGHWAYS LIGHTING COLUMNS |
| | M STANDS FOR LARGER CYCLES (16 SPACES) | | DETERRENT PAVING | | EXISTING LIGHTING COLUMNS TO REMAIN |
| | TACTILE PAVING | | TRAFFIC LIGHTS | | DRAINAGE SWALE |



- NOTES**
- FOR HIGHWAYS CROSS SECTIONS PLEASE REFER TO DRAWINGS H19532-SKA-HGN-ZZ-DR-CH-0710, 711, 713, 715, 716, 717, 718, 719, 721 & 740.
 - FOR LIGHTING LAYOUT DETAILS PLEASE REFER TO 1300 SERIES DRAWINGS.
 - FOR TRAVEL HUB DRAINAGE DETAILS PLEASE REFER TO 0500 & 0600 SERIES DRAWINGS.
 - FOR HIGHWAYS DRAINAGE DETAILS PLEASE REFER TO J&P DRAWINGS.

SAFETY, HEALTH AND ENVIRONMENTAL INFORMATION

| | |
|----------------------------|------------------------------|
| CONSTRUCTION | (ENTER 'NONE' IF APPLICABLE) |
| MAINTENANCE/CLEANING | (ENTER 'NONE' IF APPLICABLE) |
| USE | (ENTER 'NONE' IF APPLICABLE) |
| DECOMMISSIONING/DEMOLITION | (ENTER 'NONE' IF APPLICABLE) |

| | | | | | | | | | |
|-----|---------------------|----|----------|-------|------|------|-----------------------------|-------|------|
| P01 | ISSUED FOR PLANNING | ST | 04.06.20 | JRM | AH | S4 | SUITABLE FOR STAGE APPROVAL | 06/20 | AH |
| Rev | Description | By | Date | Chk'd | Auth | Stat | Purpose of Issue | Date | Auth |



Cambridgeshire Highways
 Unit 1A, Vantage House
 Washingley Road
 Huntingdon
 PE29 6SR
 Tel: (01223) 785165
 cambridgeshirehighways@skanska.co.uk

Project
 CAMBRIDGE SOUTH WEST TRAVEL HUB

| | | | |
|----------------|---------------------------------|--------------------------|----------|
| Title | | HIGHWAYS GA SHEET 7 OF 8 | |
| Original Scale | 1:500 | Designed/Drawn | ST |
| Checked | JRM | Authorised | AH |
| Date | 04.06.20 | Date | 04.06.20 |
| Date | 04.06.20 | Date | 04.06.20 |
| Drawing Number | H19532-SKA-HGN-ZZ-DR-CH-0765-S4 | Rev | P01 |